



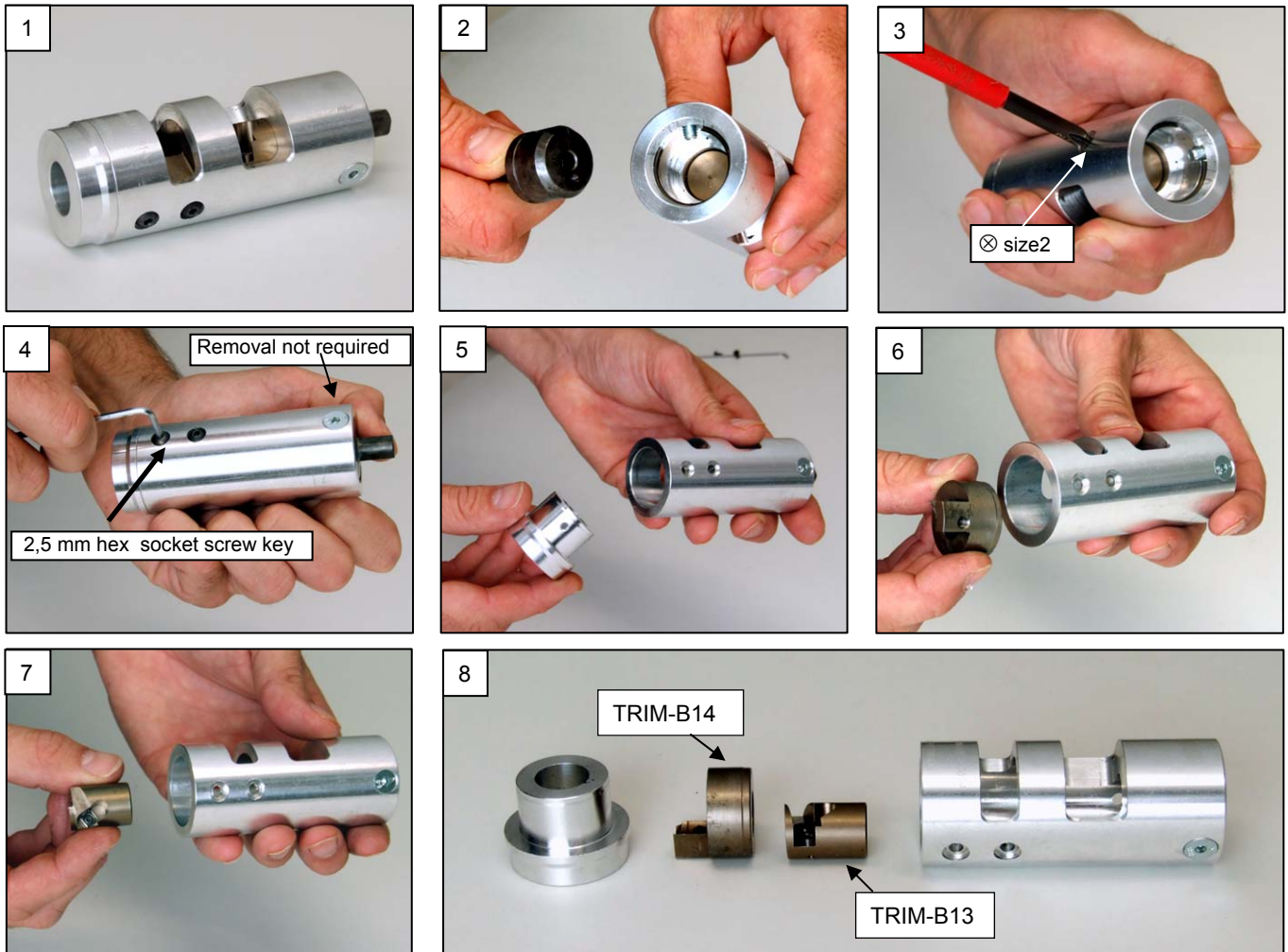
CELLFLEX® Coaxial Cable Trimming Tool for Connectors

Instructions for maintenance 2800096-C TRIM-LCF12-D01-A Trimming Tool for OMNI FIT™ Premium Connectors Series D01 for LCF12 cables

These instructions are written for qualified and experienced personnel. Please study them carefully before starting any work. Any liability or responsibility for the results of improper or unsafe installation practices is disclaimed. Please respect valid environmental regulations for assembly and waste disposal. Always make sure to use appropriate personal protection!

Safety Precaution: Sharp Blades

This tool is intended for the installation of connectors OMNI FIT™ Premium Series D01 for Cables LCF12 J & JL versions



Maintenance of the tool

To ensure the longest possible tool life, the tool should be maintained in good, clean condition. When not in use the tool should be stored in a clean, dry environment, preferably a toolbox.

The steps below describe the maintenance of the tool (cleaning and changing of cutters).

1. Complete tool before start of disassembly.
2. Remove the flaring bit (rotate counter clockwise and pull it out).
3. Remove the screw using a Philips screwdriver, size Pozidriv PZ 2.
4. Remove the two screws shown using a hex key size 2,5 mm (Imperial cannot be used).
5. Take out the cable guide. A screwdriver or similar tool can be helpful to carefully push out all the inner parts.
6. Take out the jacket cutter.
7. Take out the outer conductor/foam cutter.
8. Before re-assembly – All parts have to be checked for obvious damages, only to be re-assembled if nothing is visible; return to supplier in case of doubt. Double check if all parts fit into their original places without having to apply excessive force. Properly tighten screws to 3Nm torque

For the use of this tool - please refer to the installation instructions of the respective connector.



Radio Frequency Systems

United States +1-203-630-3311

Australia +61-3-9751-8400 · Brazil +55-11-4785-2433

www.rfsworld.com

Germany +49-511-676-2731

China +86-21-5774-4500