



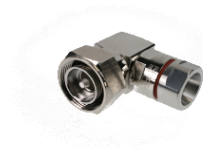
7-16 DIN Male Right Angle Connector for 1/2" Coaxial Cable, OMNI FIT™ standard, O-ring sealing

OMNI FIT™ high performance connectors are designed for use with both CELLFLEX® (copper) and CELLFLEX® Lite (aluminum) cables. They are designed specifically to provide the highest quality connector-cable interface while simplifying and speeding up connector attachment. All RFS connectors are fully tested for mechanical and electrical compliance to industry specifications.

The 7-16 connector is the most rugged RF connection meeting all requirements even under the most severe environmental conditions.

FEATURES / BENEFITS

- Cost effective two-piece design for safe and easy installation
- Compatible with copper and aluminium cable types i.e. one connector for both outer conductor materials eliminates the risk of faulty connector installation and helps to keep inventory down
- Robust mechanical design for low and consistent intermodulation performance i.e. keeps the mobile network performance up reduces the number of dropped calls and avoids revenue losses
- Superior electrical performance for consistent and repeatable VSWR i.e. ensure network system performance
- Waterproof to IP 68 i.e. no downtime risk, secures revenue
- RoHS (EU) and CRoHS (China) compliant i.e. can be used on a global basis



OMNI FIT™ Standard Connectors

Technical Features

GENERAL SPECIFICATIONS

Transmission Line Type		Coaxial Cable
Cable Size		1/2"
Cable Type		Foam Dielectric
Model Series		LCF12-50 Series ICA12-50 Series
Connector Interface		7-16 DIN
Connector Type		OMNI FIT™ Standard Right Angle
Sealing Method		O-Ring
Gender		Male

ELECTRICAL SPECIFICATIONS

Nominal Impedance	Ohm	50
3rd Order IM Product @ 2x20 Watts	dBc	-159 typical
Maximum Frequency	GHz	3.7
VSWR, Return Loss	VSWR (dB)	0 < f ≤ 1.0 GHz: 1.04 (34.1) 1.0 < f ≤ 2.2 GHz: 1.07 (29.4) 2.2 < f ≤ 2.7 GHz: 1.09 (27.3) 2.7 < f ≤ 3.7 GHz: 1.13 (null)

MECHANICAL SPECIFICATIONS

Plating Outer/Inner		Trimetal/Silver
Length	mm (in)	60 (2.4)
Outer Diameter	mm (in)	48 (1.9)
Weight	kg (lb)	0.25 (0.55)
Inner Contact Attachment		Basket
Outer Contact Attachment		Spring C-Ring

ACCESSORIES

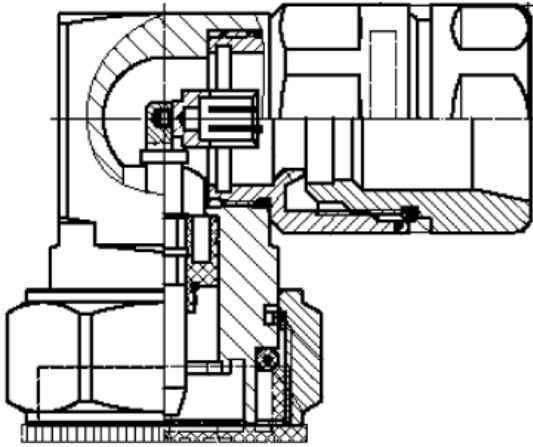
Wrench size front	mm (in)	24 (15/16)
Wrench size rear	mm (in)	24 (15/16)

TESTING AND ENVIRONMENTAL

Waterproof Level		IP68
------------------	--	------



7-16 DIN Male Right Angle Connector for 1/2" Coaxial Cable, OMNI FIT™ standard, O-ring sealing



External Document Links

Application Note
Installation instruction

Notes