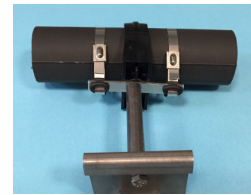


Cable Hanger, for 1/2" RADIAFLEX® Cable

Fire resistance hanger for RCF12 and all RADIAFLEX® 1/2" cables with copper foil outer conductor. In standard free space conditions the clamp is not negatively influencing the PIM performance of the RADIAFLEX cable with NF-RA12-P01/P02 connector. Prerequisite is an installation according to the installation manual of the individual component.

FEATURES / BENEFITS

- ➔ Stainless steel hangers for fire resistant installation of RADIAFLEX® cables.
- ➔ No deterioration of passive intermodulation.
- ➔ Can be optimal used with 50/80 mm Round Base instead of the metal tube spacer.
- ➔ Installation every 10 m (32.8 ft) as fire resistance support for RADIAFLEX®. Keeps the RADIAFLEX® cable in position during fire impact to prevent potential blocking of escape routes. All installation components should be made of stainless steel.



shows CLAMP-RA114-P02* for illustration

Technical Features

GENERAL SPECIFICATIONS

Product Line		Coaxial Cable Accessories
Product Type		Hanger
Transmission Line Type		RCF, RHCA, ALF, RLK
Cable Type		Coaxial Foam Dielectric

MECHANICAL SPECIFICATIONS

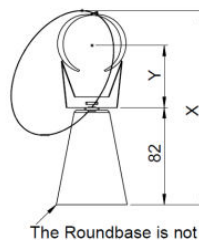
Cable Size		1/2"
Number of Cable / Waveguide Runs		1
Material		Stainless Steel
Mounting Screw		M6, length depends on the installation solution (not included)
Drill Hole Size	mm (in)	8 (0.31)
Recommended / Maximum Clamp Spacing	m (ft)	8 / 10 (26.3 / 32.8)

PACKAGING INFORMATION

Package Quantity		25
------------------	--	----



shows Clamp-RA114-P02*



The Roundbase is not part of the Kit

Typ	X	Y
Clamp-RA158-P02	154	58
Clamp-RA114-P02	135,5	37
Clamp-RA078-P02	126	31
Clamp-RA012-P02	109,25	21,5

CLAMP-RA-P02 sketch a

External Document Links

Notes

- ➔ Valid for all 1/2" types
- ➔ One package consists of 25 kits
- ➔ 1 Kit contains 2x rubber, 2x cable tie, 1 plate, 1x ClicClamp - CC-114
- ➔ * picture shows hanger with additional accessories, which are not included in the scope of delivery, they have to be ordered separately